



**ha** hakim's aalim  
SALON BEAUTY LIFESTYLE

**P U N E**



**ha** hakim's aalim  
SALON BEAUTY LIFESTYLE

“Taxes will be applicable on all services as per prevailing government regulations.”

# HAIRCUTS & STYLING

INR  
(onwards)

## STYLE DIRECTOR

**MALE**

**2,000/-**

**FEMALE**

**2,400/-**

[BLOWDRY WILL BE DONE BY ASSISTANTS]

## TOP STYLIST

**MALE** [CUT-SHAMPOO-STYLING]

**1,600/-**

**FEMALE** [CUT-SHAMPOO-STYLING]

**1,900/-**

## SR.STYLIST

**MALE** [CUT-SHAMPOO-STYLING]

**1,300/-**

**FEMALE** [CUT-SHAMPOO-STYLING]

**1,700/-**

## STYLIST

**MALE** [CUT-SHAMPOO-STYLING]

**1,000/-**

**FEMALE** [CUT-SHAMPOO-STYLING]

**1,300/-**





“Taxes will be applicable on all services as per prevailing government regulations.”

INR  
(onwards)

<b><u>SHAMPOO (M)</u></b>	<b>150/-</b>
<b><u>CONDITIONER(M)</u></b>	<b>150/-</b>
<b><u>SHAMPOO (F)</u></b>	<b>200/-</b>
<b><u>CONDITIONER(F)</u></b>	<b>200/-</b>
<b><u>SPA (M)</u></b>	<b>1,050/-</b>
<b><u>SPA (F)</u></b>	<b>1,250/-</b>
<b><u>HAIR TREATMENT (POWER DOSE)</u></b>	<b>350/-</b>
<b><u>SCALP TREATMENT (M)</u></b>	<b>1,000/-</b>
<b><u>SCALP TREATMENT (F)</u></b>	<b>1,250/-</b>
<b><u>BLOW DRY</u></b>	<b>750/-</b>
<b><u>IRONING</u></b>	<b>750/-</b>
<b><u>STYLING (M)</u></b>	<b>250/-</b>
<b><u>BRAIDING (PER HOUR)</u></b>	<b>1,400/-</b>





“Taxes will be applicable on all services as per prevailing government regulations.”

INR  
(onwards)

SHAVING

**650/-**

BEARD TRIM

**450/-**





“Taxes will be applicable on all services as per prevailing government regulations.”

INR  
(onwards)

## **MOROCCON OIL**

### **HYDRATION**

<b>MALE</b>	<b>1,500/-</b>
<b>FEMALE</b>	<b>2,000/-</b>

### **REPAIR**

<b>MALE</b>	<b>2,000/-</b>
<b>FEMALE</b>	<b>2,500/-</b>

### **SMOOTHENING**

<b>MALE</b>	<b>2,500/-</b>
<b>FEMALE</b>	<b>3,000/-</b>

### **HYDRATION(WEIGHTLESS)**

<b>MALE</b>	<b>2,500/-</b>
<b>FEMALE</b>	<b>3,000/-</b>

### **L'OREAL**

<b>MALE</b>	<b>1,050/-</b>
<b>FEMALE</b>	<b>1,250/-</b>

### **PRO-FIBER**

<b>MALE</b>	<b>2,500/-</b>
<b>FEMALE</b>	<b>3,500/-</b>

### **NASHI**

<b>MALE</b>	<b>2,500/-</b>
<b>FEMALE</b>	<b>3,000/-</b>



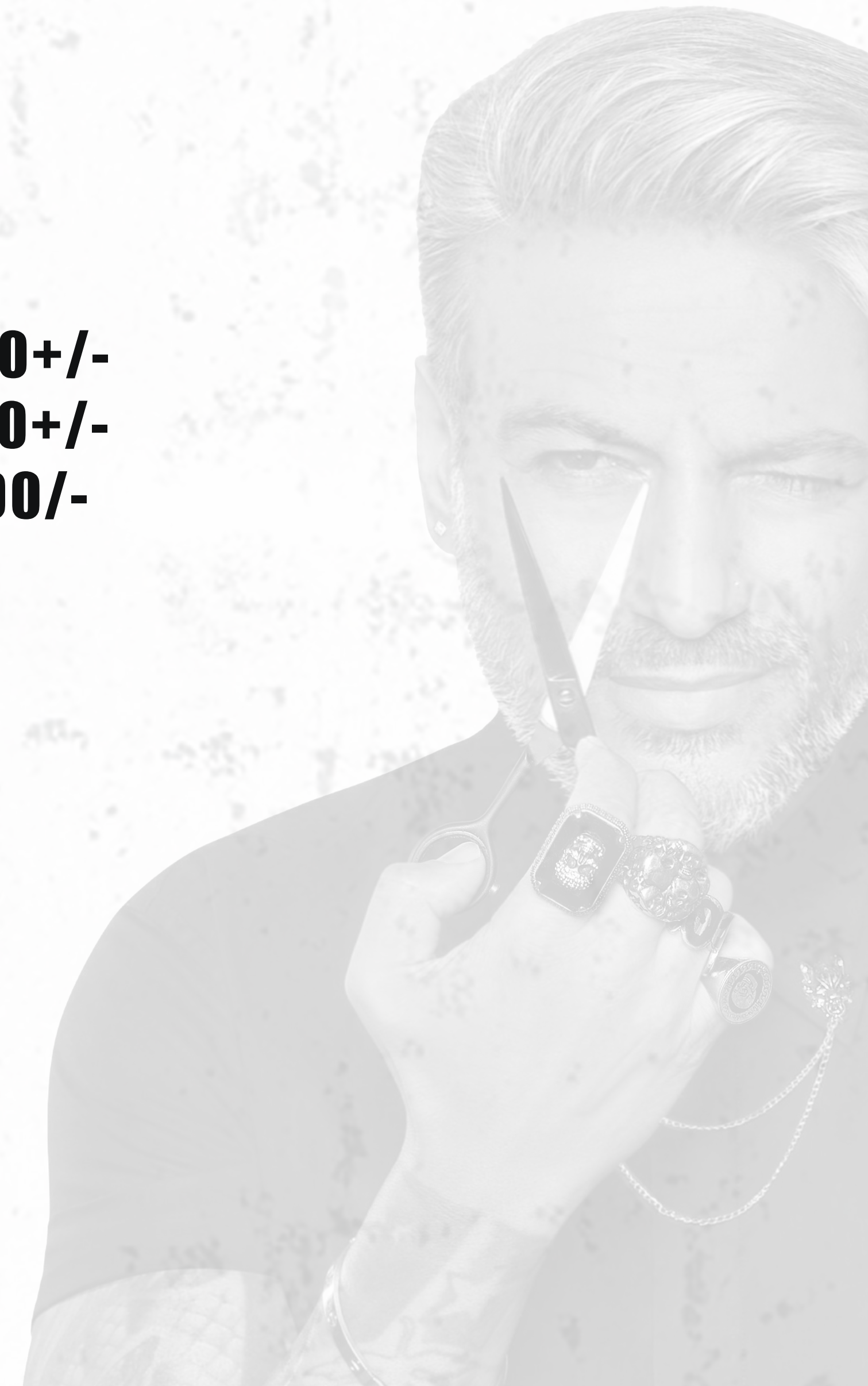


“Taxes will be applicable on all services as per prevailing government regulations.”

INR  
(onwards)

<u>CUT &amp; FILE</u>	<b>200/-</b>
<u>FRENCH NAILS REGULAR</u>	<b>350/-</b>
<u>REGULAR POLISH</u>	<b>200/-</b>
<u>GLITTER GEL POLISH</u>	<b>1,000/-</b>
<u>GEL POLISH</u>	<b>800/-</b>
<u>FRENCH NAIL GEL</u>	<b>700/-</b>
<u>NEW SET GEL</u>	<b>2,200/-</b>
<u>NEW SET ACRYLIC</u>	<b>2,500/-</b>
<u>CHROME</u>	<b>1,200/-</b>
<u>SHUTTER GLASS</u>	<b>700/-</b>
<u>NAIL ART</u>	<b>1,000+/-</b>

<u>EXTENSION REMOVER</u>	<b>800+/-</b>
<u>GEL POLISH REMOVER</u>	<b>200+/-</b>
<u>INBUILT GLITTER</u>	<b>700/-</b>





“Taxes will be applicable on all services as per prevailing government regulations.”

**INR**  
(onwards)

**THREADING**

<b>EYEBROW</b>	<b>100/-</b>
<b>FOREHEAD</b>	<b>100/-</b>
<b>SIDELOCK</b>	<b>100/-</b>
<b>NECK</b>	<b>200/-</b>
<b>FULL FACE</b>	<b>500/-</b>
<b>UPPER LIP</b>	<b>60/-</b>
<b>LOWER LIP</b>	<b>60/-</b>
<b>CHIN</b>	<b>60/-</b>

**DETAN**

<b>FACE</b>	<b>1,200/-</b>
<b>FULL HAND</b>	<b>1,000/-</b>
<b>HALF LEG</b>	<b>700/-</b>
<b>FULL LEGS</b>	<b>1,200/-</b>





“Taxes will be applicable on all services as per prevailing government regulations.”

INR  
(onwards)

**REBONDING**

**6,000/-**

**RELAXING**

**2,300/-**

**PERMING**

**2,300/-**

**HI-LITES**

**1,000/-**

**LO-LITES**

**1,000/-**

**GLOBAL COLOR**

**1,500/-**

**REGROWTH COLOR**

**1,200/-**

**PRE-LIGHTING**

**1,000/-**

**HALF-HEAD**

**1,800/-**

**T-SECTION**

**1,000/-**

**KERATIN**

**1,500/-**

**CYSTINE**

**1,500/-**

**OLAPELX**

**2,500/-**

**HEAD MASSAGE**

**1,000/-**





“Taxes will be applicable on all services as per prevailing government regulations.”

INR  
(onwards)

REGULAR	CHOCOLATE
<b>200/-</b>	<b>400/-</b>
<b>500/-</b>	<b>800/-</b>
<b>250/-</b>	<b>400/-</b>
<b>500/-</b>	<b>750/-</b>
<b>300/-</b>	<b>600/-</b>
<b>700/-</b>	<b>1,400/-</b>
<b>400/-</b>	<b>800/-</b>
<b>700/-</b>	<b>1,400/-</b>
<b>400/-</b>	<b>800/-</b>
<b>400/-</b>	<b>600/-</b>
<b>1,250/-</b>	<b>1,600/-</b>
<b>800/-</b>	<b>1,000/-</b>
<b>3,000/-</b>	<b>4,000/-</b>

**UNDERARMS**

**FULL ARMS**

**HALF ARMS**

**FULL LEGS**

**HALF LEGS**

**FULL BACK**

**HALF BACK**

**FULL FRONT**

**HALF FRONT**

**STOMACH**

**BRAZILLIAN (FRONT & BACK)**

**BIKINI (FRONT)**

**FULL BODY (EXCLUDING BIKINI)**





“Taxes will be applicable on all services as per prevailing government regulations.”

INR  
(onwards)

**REGULAR [NO MASK N SCRUB]**

**550/-**

**REGULAR [WITH MASK AND SCURB]**

**800/-**

**DERMALOGICA**

**1,000/-**

**BOMB**

**1,800/-**

**ME BATH**

**1,050/-**

**CLASSIC**

**1,250/-**

**ROYAL**

**1,600/-**

**SIGNATURE**





“Taxes will be applicable on all services as per prevailing government regulations.”

INR  
(onwards)

**REGULAR [NO MASK N SCRUB]**

**800/-**

**REGULAR [WITH MASK AND SCURB]**

**1,000/-**

**DERMALOGICA**

**1,200/-**

**BOMB**

**2,000/-**

**ME BATH**

**1,250/-**

**CLASSIC**

**1,400/-**

**ROYAL**

**1,800/-**

**SIGNATURE**





**ha** hakim's aalim  
SALON BEAUTY LIFESTYLE

**P U N E**

[www.hakimsaalim.com](http://www.hakimsaalim.com)